



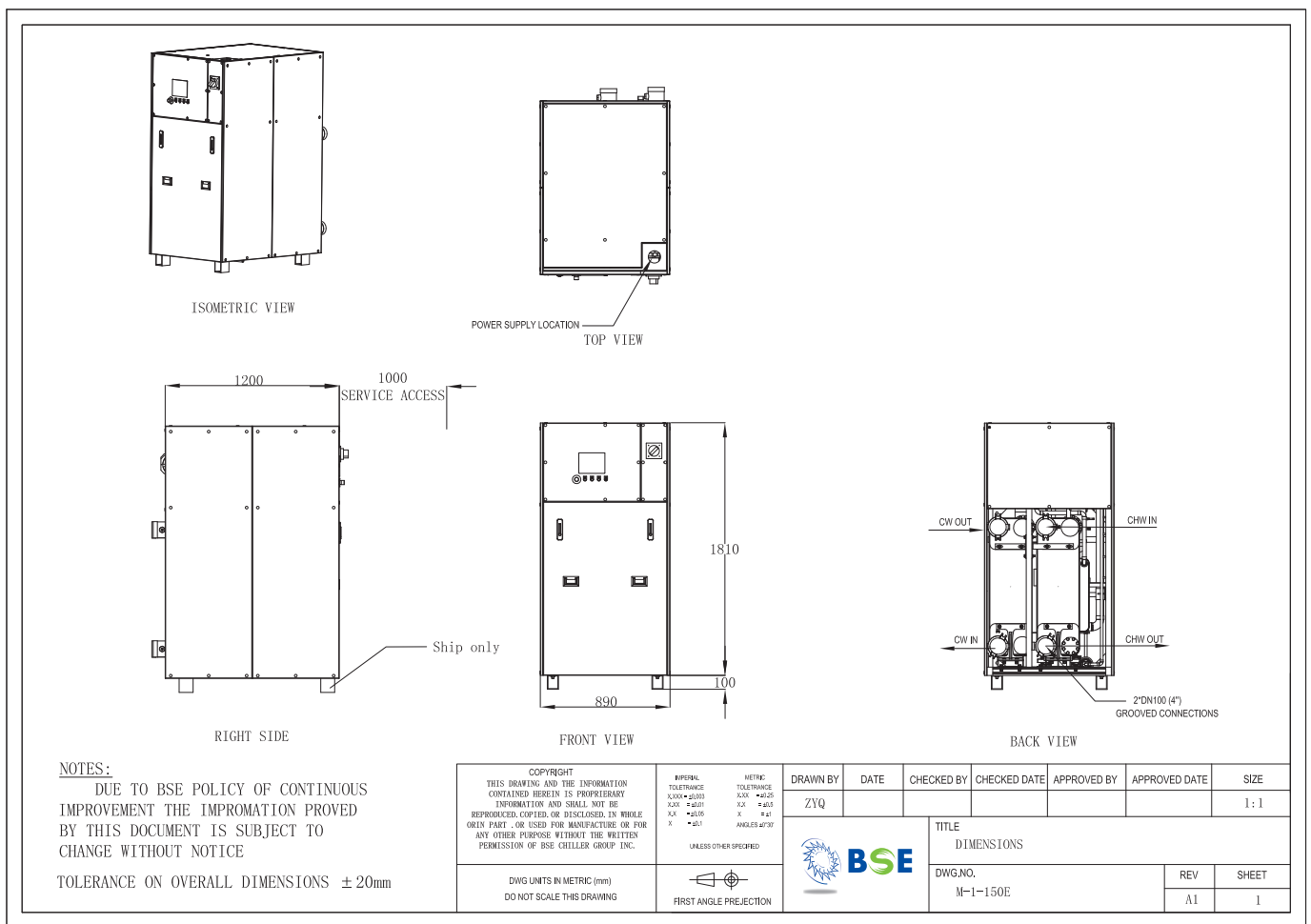
BSE

BSE CHILLER GROUP WE MAKE OIL FREE CHILLER



I-CHILLER™

- Model: **BMMW0350EVB1**
- Unified size: **1.2mx0.89mx1.8m**
- Small Footprint : **1m²**
- Weight only : **1 Ton**
- Sound Level: **55dB(A)**
- Patents: **30**



BSE (Suzhou) Air Conditioning Co., Ltd.

Add: No.158 Jinshajiang road,Suzhou New District

Tel: +86-512-66890626

Fax: +86-512-66890526

Email: sales@bse.com.cn

BSE Asia Pacific Regional Office

Add: Unit R, 15th Floor, Wah Lik Industrial Centre, 459-469 Castle Peak Road, Tsuen Wan, New Territories, Hong Kong

Tel: 00852-35231760

Fax: 00852-35231761

Email: adam.lee@bse.com.cn

BSE Suzhou Air Conditioning Co., Ltd.
www.bse.com.cn Hotline: 400 850 6998



Twitter



Facebook

BSE
Believe in Saving Energy
BSE19TN01(01)01-1



BSE

BSE CHILLER GROUP WE MAKE OIL FREE CHILLER



I-CHILLER™

- Model: **BMMW0525EVD1**
- Unified size: **1.2mx0.89mx1.8m**
- Small Footprint : **1m²**
- Weight only : **1 Ton**
- Sound Level: **55dB(A)**
- Patents: **30**

ISOMETRIC VIEW

TOP VIEW
POWER SUPPLY LOCATION

RIGHT SIDE
1200
1000 SERVICE ACCESS
Ship only

FRONT VIEW
1810
890
100

BACK VIEW
CW OUT
CHW IN
CW IN
CHW OUT
2"DN100 (4") GROOVED CONNECTIONS

NOTES:
DUE TO BSE POLICY OF CONTINUOUS IMPROVEMENT THE IMPROMATION PROVED BY THIS DOCUMENT IS SUBJECT TO CHANGE WITHOUT NOTICE
TOLERANCE ON OVERALL DIMENSIONS ± 20mm

COPYRIGHT THIS DRAWING AND THE INFORMATION CONTAINED HEREIN IS PROPRIETARY INFORMATION AND SHALL NOT BE REPRODUCED, COPIED, OR DISCLOSED IN WHOLE OR IN PART - OR USED FOR MANUFACTURE OR FOR ANY OTHER PURPOSE WITHOUT THE WRITTEN PERMISSION OF BSE CHILLER GROUP INC.	METRIC TOLERANCE XX.XX ±0.05 XX ±0.03 XX ±0.01 X ±0.05 X ±0.1 ANGLES 45°/30°	METRIC TOLERANCE XX.XX ±0.05 XX ±0.03 XX ±0.01 X ±0.05 X ±0.1 ANGLES 45°/30°	DRAWN BY ZYQ	DATE	CHECKED BY	CHECKED DATE	APPROVED BY	APPROVED DATE	SIZE 1:1
	UNLESS OTHER SPECIFIED FIRST ANGLE PROJECTION	DWG UNITS IN METRIC (mm) DO NOT SCALE THIS DRAWING		TITLE DIMENSIONS			DWG.NO. M-1-150E	REV A1	SHEET 1

BSE (Suzhou) Air Conditioning Co., Ltd.

Add: No.158 Jinshajiang road,Suzhou New District

Tel: +86-512-66890626

Fax: +86-512-66890526

Email: sales@bse.com.cn

BSE Asia Pacific Regional Office

Add: Unit R, 15th Floor, Wah Lik Industrial Centre, 459-469 Castle Peak Road, Tsuen Wan, New Territories, Hong Kong

Tel: 00852-35231760

Fax: 00852-35231761

Email: adam.lee@bse.com.cn

BSE Suzhou Air Conditioning Co., Ltd.
www.bse.com.cn Hotline: 400 850 6998



Twitter



Facebook

BSE
Believe in Saving Energy
BSE19TN01(01)01-2